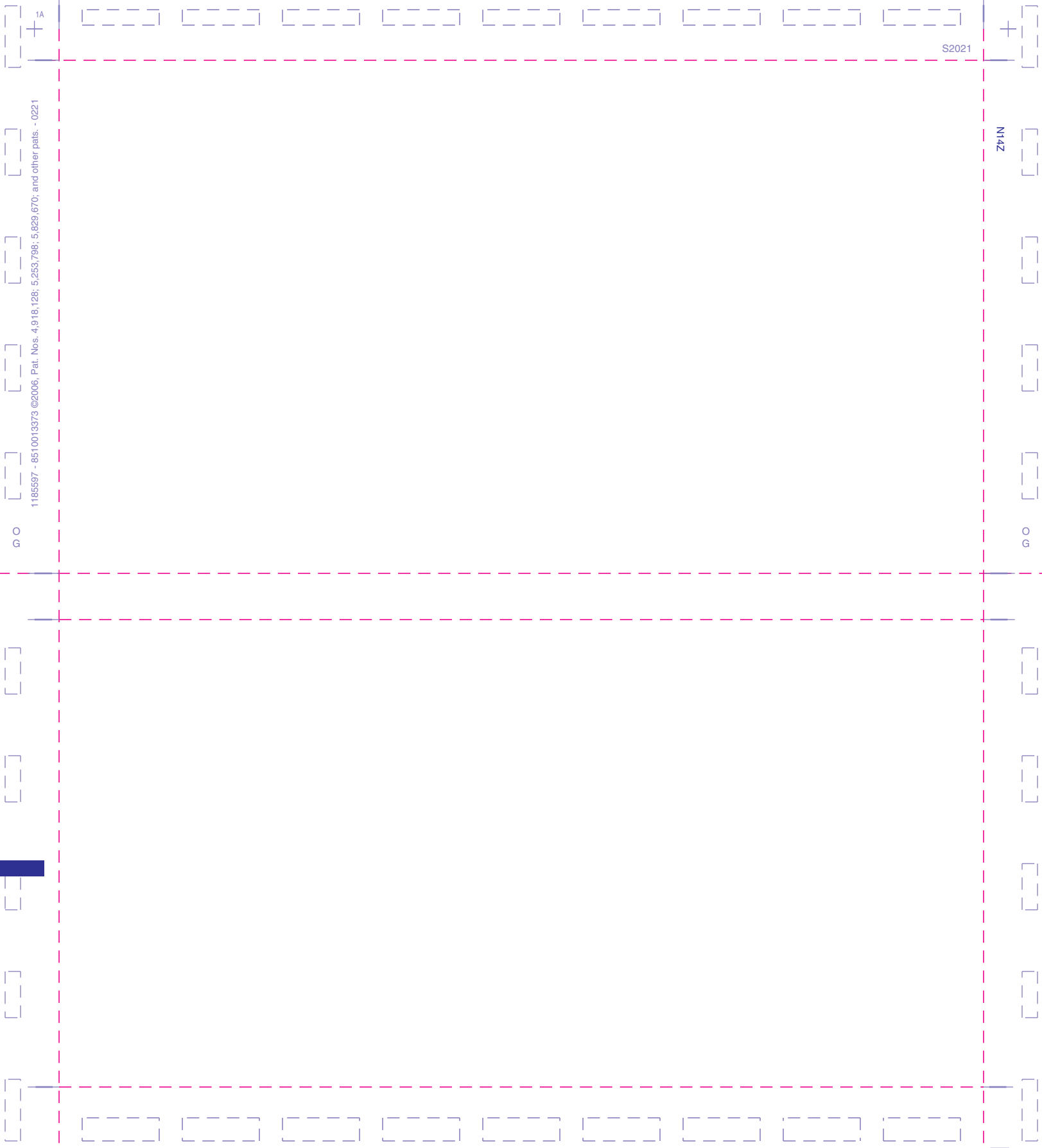


SEE REVERSE SIDE FOR
OPENING INSTRUCTIONS

SEE REVERSE SIDE FOR
OPENING INSTRUCTIONS



GO

GO

1185597 - 8510013373 ©2006, Pat. Nos. 4,918,128; 5,253,798; 5,829,670; and other pats. - 0221

S2021

N14Z

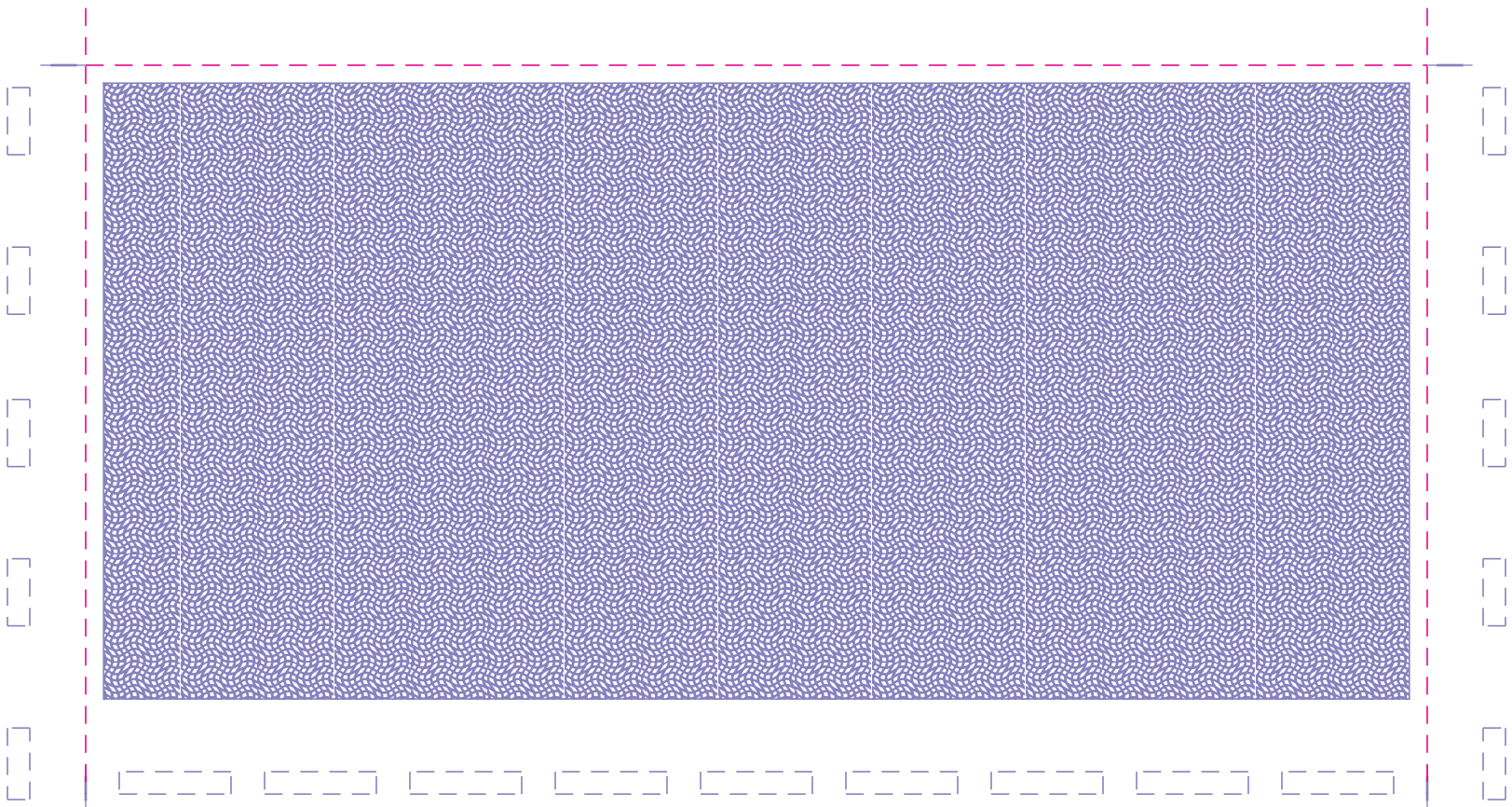
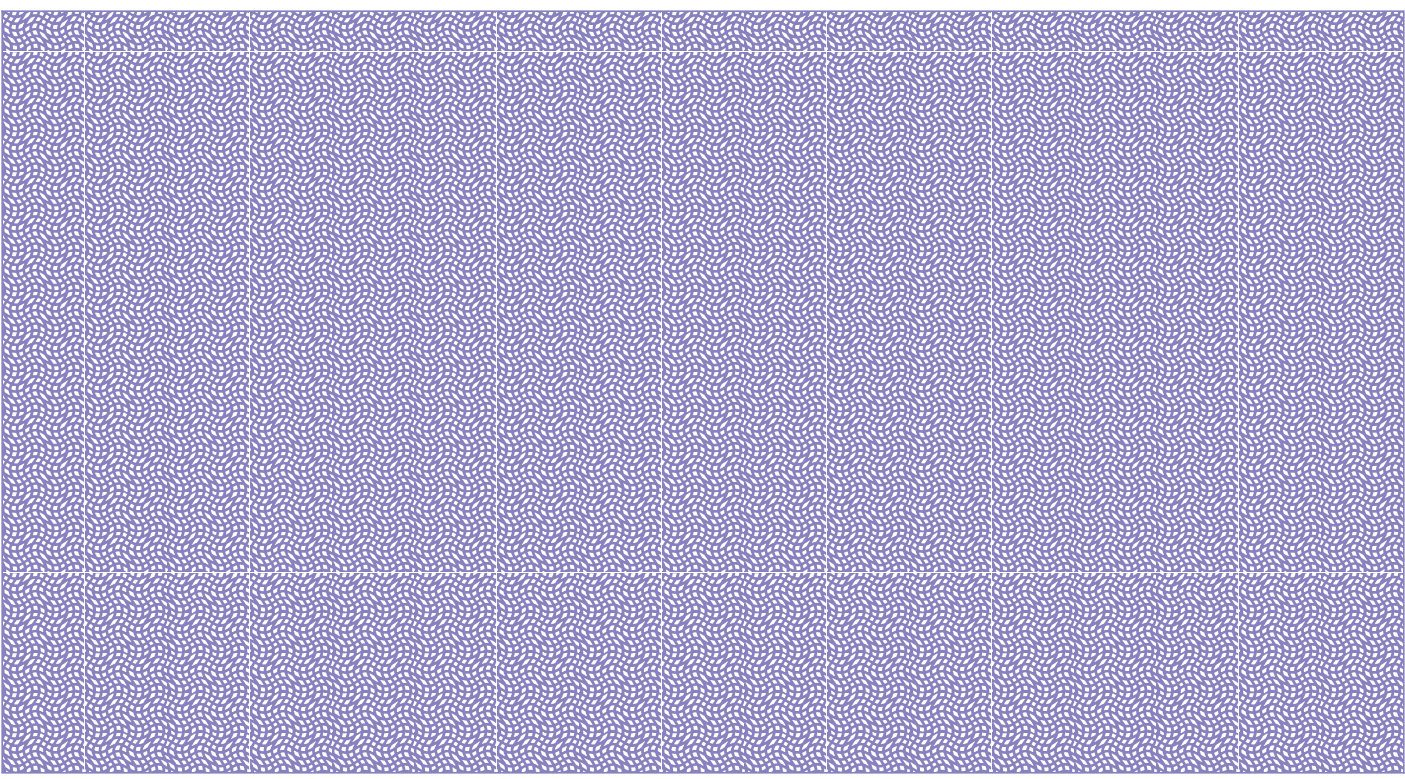


② REMOVE SIDE EDGES FIRST
THEN FOLD, CREASE AND TEAR THIS STUB ALONG PERFORATION

B1A

① REMOVE THESE EDGES FIRST
FOLD, CREASE AND TEAR ALONG PERFORATION

① REMOVE THESE EDGES FIRST
FOLD, CREASE AND TEAR ALONG PERFORATION



B1A

REGULAR BACKER; PANTOS AT 50%; 20% SCREEN.

8510013373